

Below is a list of the materials I will be providing you: I will be collecting everything back except asterisked items

*Card, paper, sugar paper

Plastic portfolio (those delivered by hand)

4b pencil

*Charcoal

Biro – black, red, blue, green

*Carbon paper

Watercolours

Paint brushes,

Oil pastels

White chalk pastel

3d Foam stickers

Masking Tape

Fineliner pen

Glue

Magazines/random paper selection for collage

Print outs for reference general, still life and portraits

To access recorded tutorials please go to www.creativehealthathome.com

Week 1

Expressive drawing.

Expressive drawing is about becoming confident in experimenting with a range of drawing media, to appreciate different drawing styles and to develop a style or styles which you feel confident in using

Materials Needed:

Reference pictures

Pencil	Fineliner pen	Paintbrush and water
Tape	Biros	Carbon paper

Wrong handed drawing: Either draw from life an object of your choice, or use one of the photos provided in the reference folder.

Continuous line drawing – look at the object not your pen (no peeking)

Tape two different coloured biro's together and use a reference photo or draw over a semi-transparent reference picture.

Tape fineliner to a stick and draw a simple picture from the reference pictures. If possible tape your paper to the wall and draw it standing up.

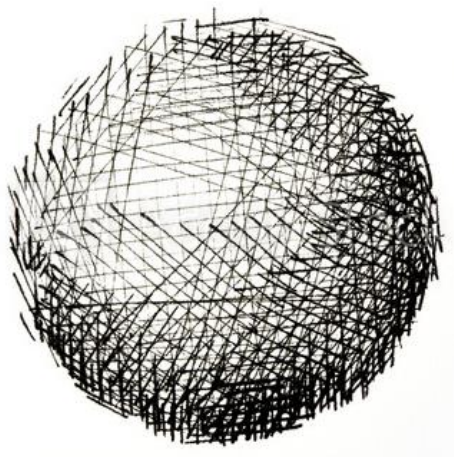
Creating a tonal drawing using a biro and scribble style drawing.

Pen and wash drawing using a fineliner pen, paintbrush and water

Charcoal and wash drawing using a glue/water mix

Home work: Collect items for still life for next week if you like to draw from life.

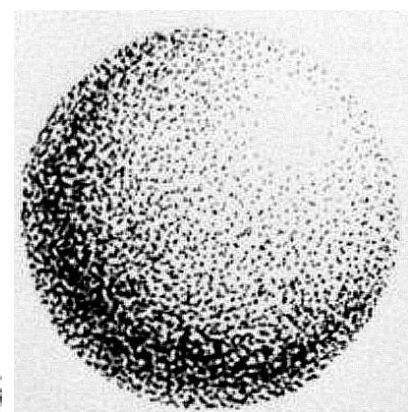
Tonal exercises



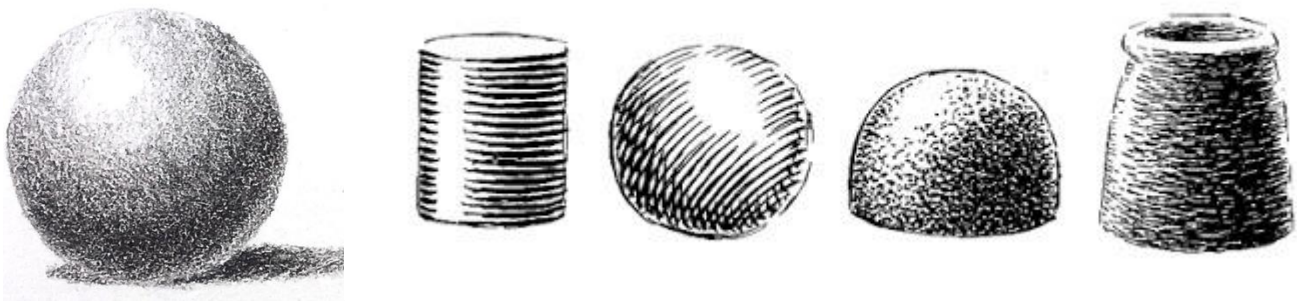
Cross hatch



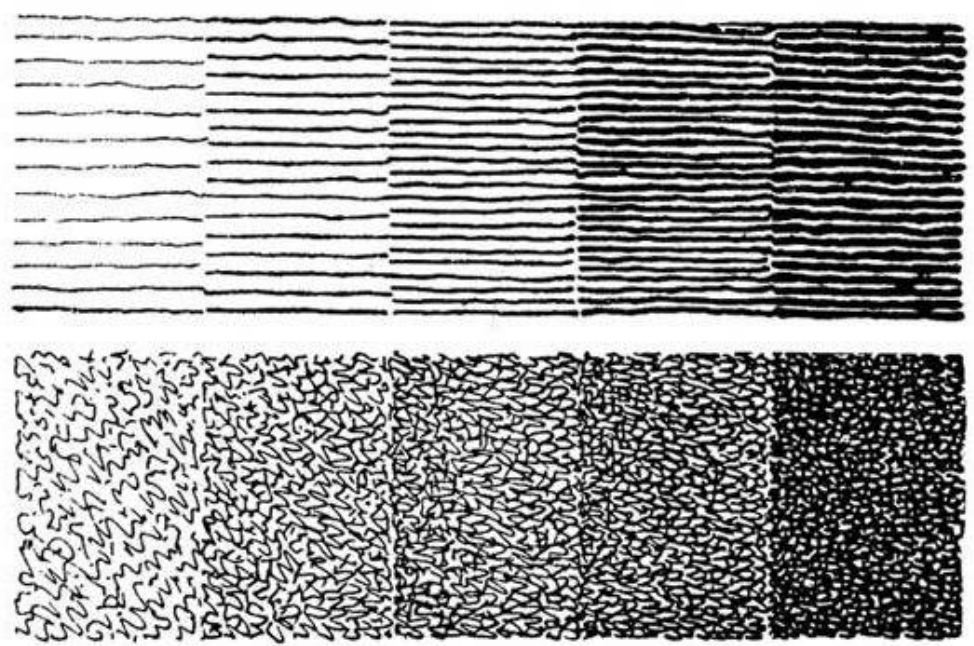
scribble



stipple

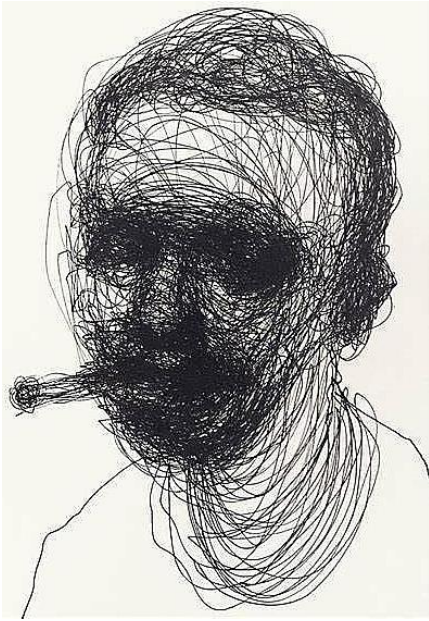


Shading



Examples of biro scribble drawings

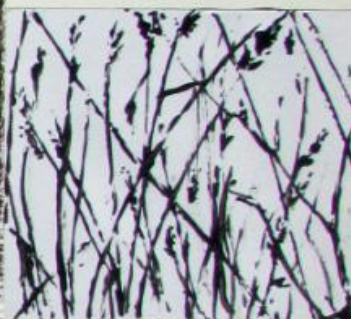
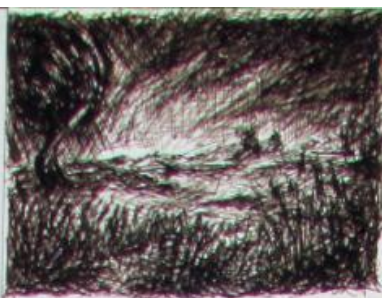




Pen and wash

Examples of little sketches using pen and wash, pencil and biro





Week2

Still Life

Materials needed:

Scissors

Glue

Carbon paper

Coloured paper

Still life reference pictures

paintbrush and water

3d foam pads

random paper/magazines

Wrong handed drawing of still life in fineliner, add water and either a few touches of collage, or fill in large areas.



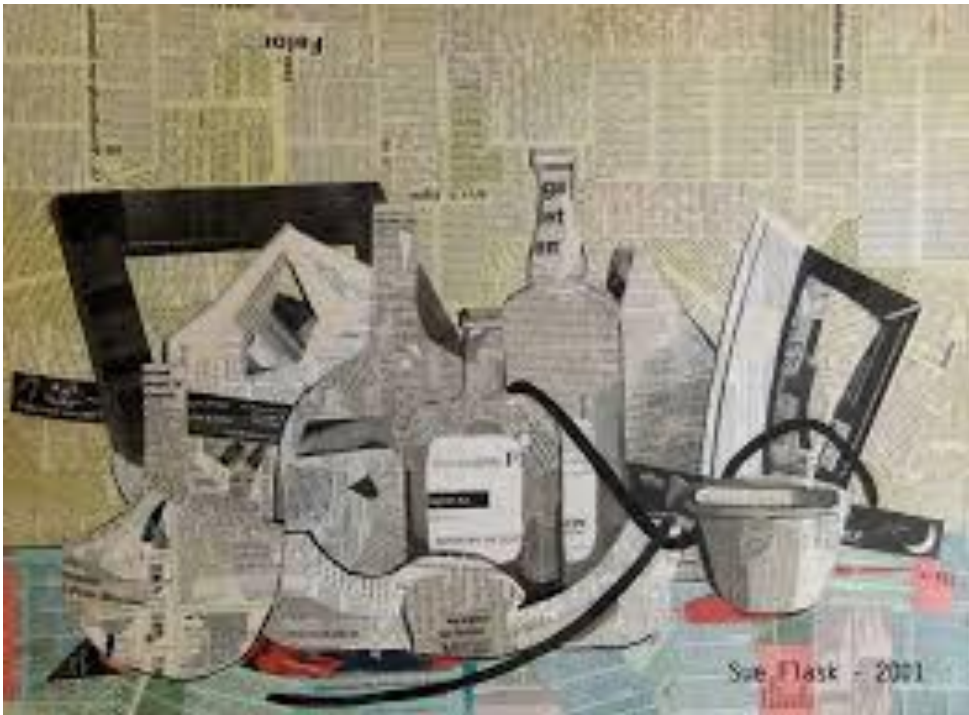
Wrong handed drawing



Normal pen and wash drawing



3d still life – create a background using a few different larger sections of paper, cut out shapes of basic still life elements, you can trace these using the carbon paper, arrange these at different levels using the 3d foam pads.





Week 3

Portraits: Charcoal drawings on sugar paper.

Materials needed:

Sugar paper

Carbon paper

Faces printouts

Charcoal

Tape

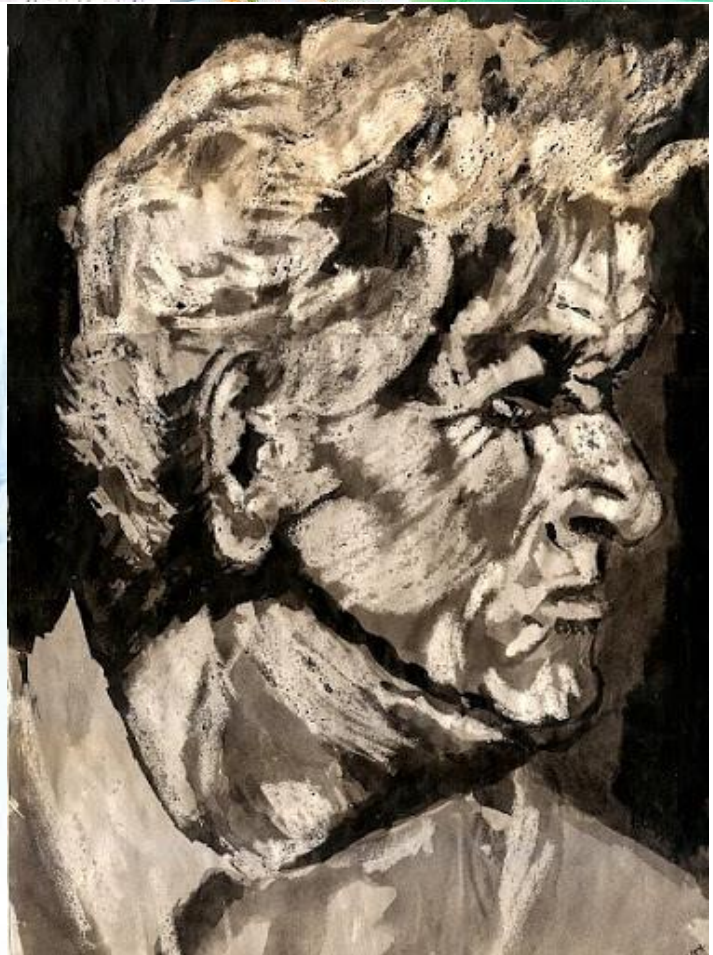
Biro

White pastel

Trace the face using the carbon paper, the sugar paper is the mid tone, add dark tones with the charcoal and highlights with white pastel.



Additional idea: Trace the face using white carbon paper, go over the white lines with oil pastel or wax (like a candle), add in mid tones using different coloured oil pastel, add watercolour wash.



Week 4

Portraits

Materials needed: oil pastels, water, paintbrush, carbon paper, paper, collage materials, glue



Week 5

Abstract

Coloured paper and random paper selection of collage paper

Scissors

glue

pencil

Still life reference

tape

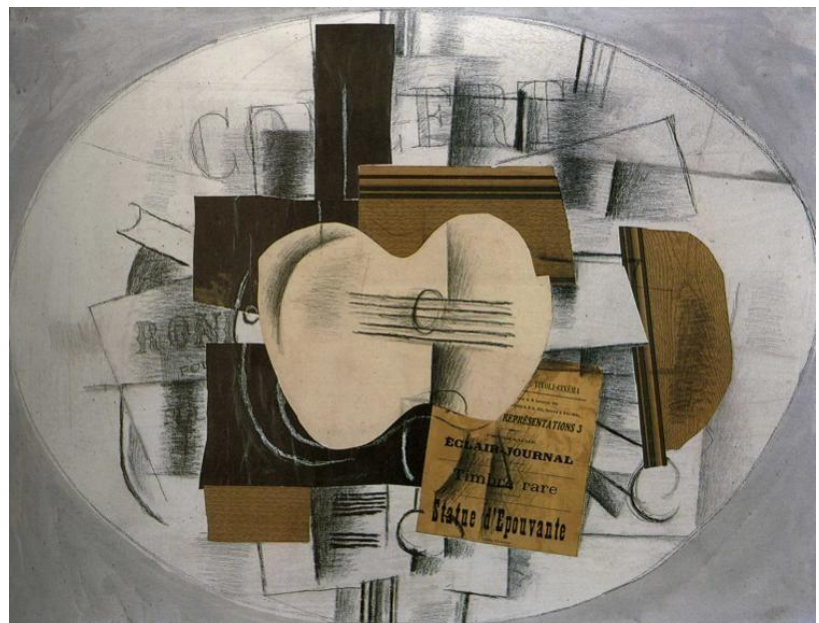
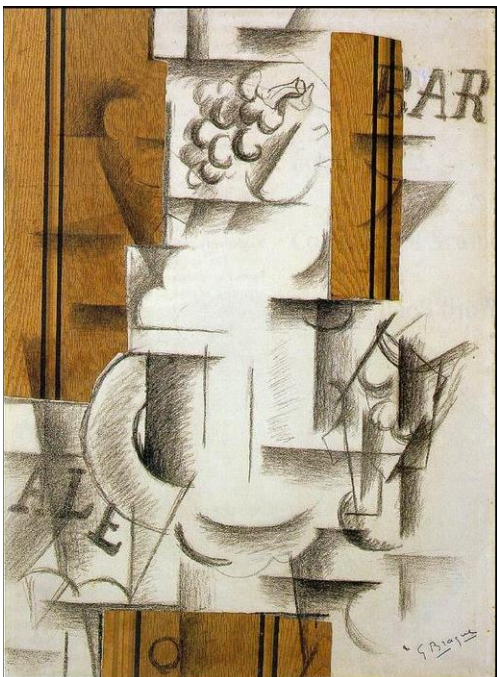
carbon paper

Matisse – cut out simple shapes and create an animal, see if we can tell what animal it is. You can trace the outline of images using carbon paper if this is helpful.



Braque inspired still life – randomly fold a piece of A4 paper, unfold and draw or trace out a simple still life scene, fill in the different sections created by the folds in different media, pen, pen and wash, coloured paper.

Draw/trace/collage further details over the top.





Paul Klee – taking a line for a walk

Walk physically, or mentally around your house, you can draw a map of your route using simple shapes to represent what you see. Draw your room as if it was made out of children's building blocks. Use oil pastels, wax resist or collage.



Week 6

Simple Prints

leaf prints, mono printing

Watercolours paintbrushes and water sponge oil pastels carbon paper
Tape biro pencil selection of paper for collage

Paper Leaf templates and leaves

Create a collage background and mono print over the top using carbon paper



Whoever lives true life will love true love.
I learnt to love that England. Very oft,
Before the day was born, or otherwise
Through secret windings of the afternoons,
I threw my hunters off and plunged myself
Among the deer, as a hunted stag
Will take the waters, following with the fear
And passion of the course. And when at last escap
So many a green slope built on a slope
Betwixt me and the enemy's house behind,
I dared to rest, or wander in a rest
Made sweeter by the step upon the grass,
And view the ground's most gentle complement
(As if God's finger touched, but did not press
In making England) such an up and down
Of verdure, nothing too much up or down,
A ripple of land, such little hills, the sky
Can show so tenderly, and the wheat fields climb;
Such nooks of valleys lined with orchises,
Fed full of noises by invisible streams;
And good pastures where you scarcely tell
White daisies from white dew, - at intervals
The mythic oaks and elm-trees standing out
Self-poised upon their prodigy of shade, -
I thought my father's land was worthy too
Of being my Shakespeare's."

Leaf prints

